



DESCRIPTION

KVS 327 butterfly valve is wafer type designed for installation between flanges without requiring any gaskets and drilled in accordance to major flange standards example BS, DIN, ANSI and JIS. They can be installed in horizontal and vertical positions on the piping systems. It is widely used in HVAC, fire protection system, water treatment plant, petrochemical and power plant. Epoxy resin coating of whole body.

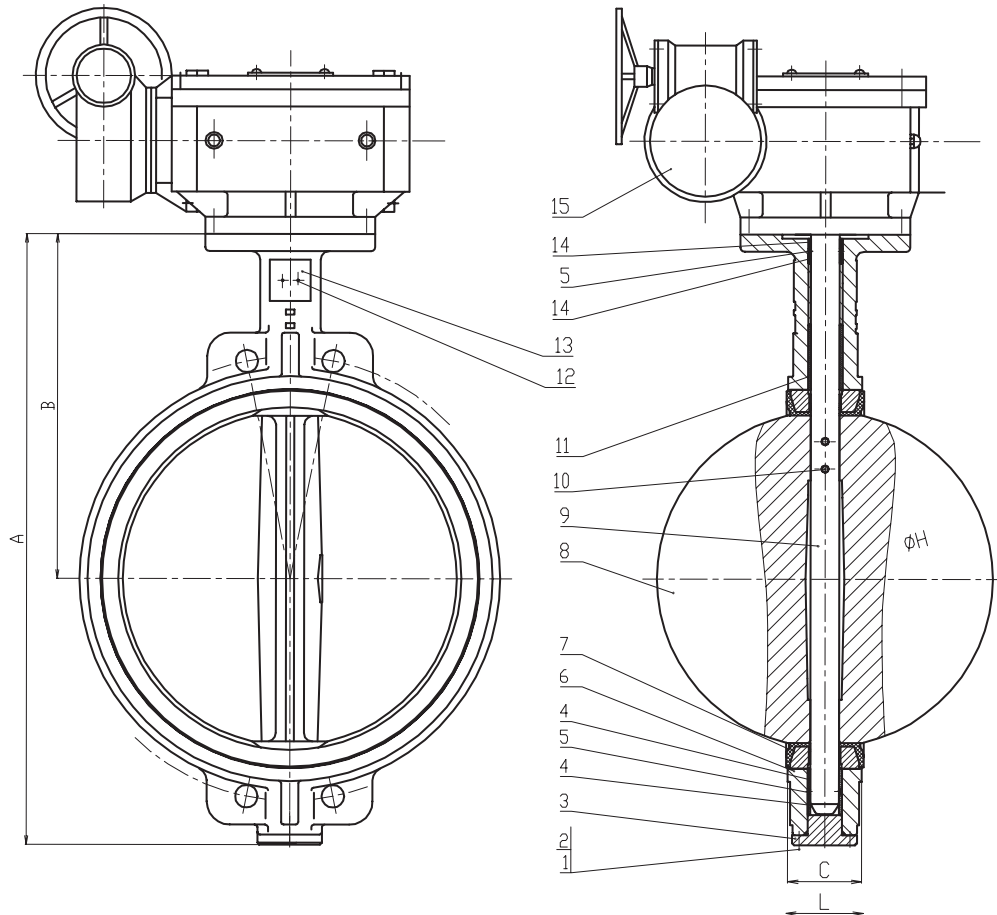
APPLICATIONS

Suitable for water, oil, air, gases and others non-aggressive media.

SPECIFICATION

- Valves are manufactured in accordance with BS 5155
- End connection: Flanges are according to BS 4504 PN16
- Operating pressure: 10 bar
- Shell test pressure: Up to 15 bar
- Temperature rating: -20°C to +130°C for EPDM, -10°C to +80°C for NBR
- Top flange dimensions: ISO 5211
- Actuation: Gear operated
- Optional: Pneumatic or Electric actuated

DRAWING



MATERIALS

No.	Component	Material	Standard BS EN
1	Screw	A3	
2	Washer	A3	
3	Cover	Cast Iron	BSEN1561
4	Bushing	PTFE	
5	O-Ring	EPDM, NBR	
6	Body	Cast Iron	BSEN1561
7	Seat	EPDM, NBR	
8	Disc	Ductile Iron + Ni, CF8	BS2789, 316C16
9	Shaft	Stainless Steel	410S21
10	Pins	Stainless Steel	316C16
11	Bushing	PTFE	
12	Plate	Aluminium	
13	Plate Rivet	Aluminium	
14	Bushing	PTFE	
15	Gear	Assemble	



WAFER TYPE BUTTERFLY VALVE WORM GEAR (KVS 327)

DIMENSIONS

Size		A (mm)	B (mm)	C (mm)	L (mm)	ØH
DN	INCH					
350	14"	635	368	76	79.5	389.61
400	16"	708.5	400	98	102	389.61
450	18"	749	422	104.6	109	440.51
500	20"	839.5	480	130.3	135	491.64

Kv (m³/h)

Size		10°	20°	30°	40°	50°	60°	70°	80°	90°
DN	INCH									
350	14"	11	169	484	1011	1973	3118	5219	9788	10421
400	16"	12	192	577	1257	2203	3773	5948	11397	12146
450	18"	15	259	789	1707	2931	5389	8272	15570	16863
500	20"	20	302	1064	2301	3757	6524	11201	20123	22795

KVS VALVE, INC.

34572 Hoca Hanım v Karaköy / İstanbul/TÜRKİYE

Tel: +90.212.259.6687 ; Fax : +90 (252) 316 88 43 (pbx)

Website: <http://www.kvsvalve.com>

