

Design Features

- ⇒ Unique expanding rubber and fixing of spring which also provides high frequency attenuation.
- ⇒ Nominal 20, 25 & 50 mm deflection colour coded springs with 50% overload capacity.
- ⇒ Can be bolted to supporting structure or free standing on 6mm thick ribbed rubber pad.
- ⇒ Fully height adjustable.
- ⇒ Zinc plated metals.
- ⇒ No snubbing gives maximum efficiency.

This unique range of open spring mounting uses an integral rubber end fixing of the spring which sets them apart from all other designs. Loose springs and plates are now history and high frequency and noise attenuation is provided regardless of whether rubber seating pad is used or not.

Isolation Efficiency at Typical Machine Speeds

M/C Speed (rpm)	EFFICIENCY %		
	15mm DEFL	25mm DEFL	50mm DEFL
300	do not use	34.0	75.2
500	68.7	83.3	92.3
750	88.1	93.2	96.7
1000	93.7	96.3	98.2
1200	95.5	97.4	98.7
1500	97.3	98.4	99.2
1750	98.0	99.8	99.4
2000	98.5	99.1	99.5

This above figures are theoretical values only based on the vertical natural frequency of the spring system assuming in infinitely stiff structural supports. The effects of high frequency spring coil resonances on low frequency performance are also ignored.

Originally designed for use with type IPF Inertia Pouring Frames, the EFOS Mountings are now widely used to isolate vibration from every conceivable type of rotating and reciprocating machine. Some examples being air handling units, axial and centrifugal fans, low level pipe work, ductwork, condensing units, pumps, generating sets, chillers, etc. Where control of transient motion is required open spring mountings can be used in conjunction with our Viscous Dampers Type EFVD.

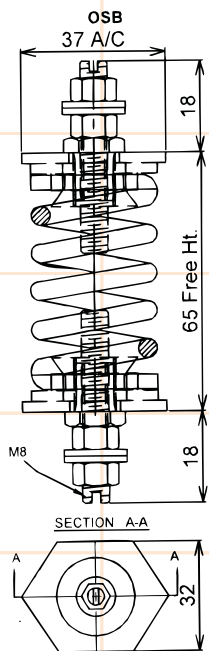
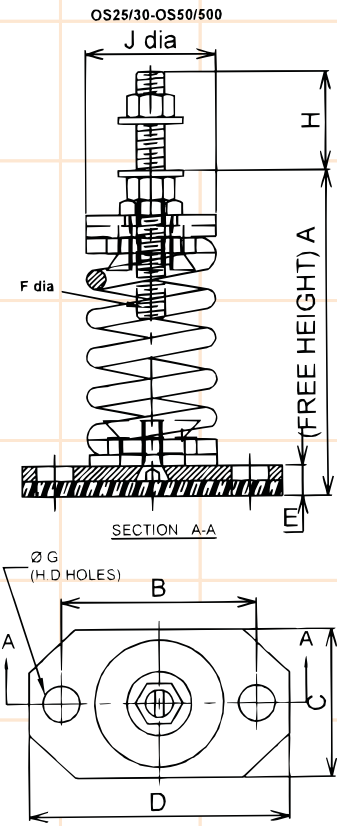
Size	LOAD RANGE (kg)	NOMINAL DEFLECTION (mm)
EFOSB	10-100	20
EFOS25	30-2300	25
EFOS50	100-1300	50

- ⇒ Due to policy of continual improvement, the specifications are subject to change without prior notice.
- ⇒ Measurements are subject to 5% tolerance.
- ⇒ To achieve good sound suppression do not over load fitting.

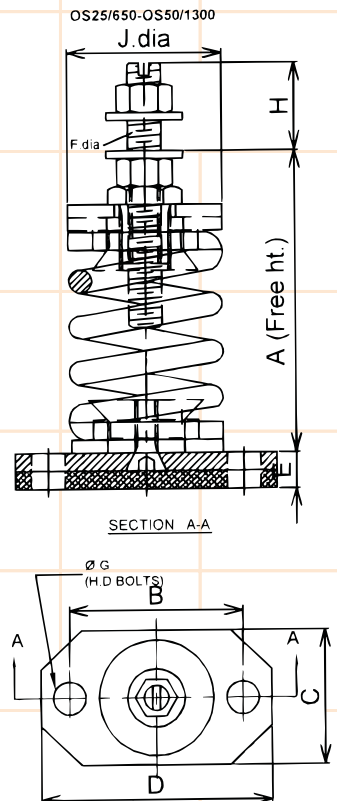
Design Data & Dimensions

PART NO.	COLOUR CODE	RATED LOAD (KG)	DEFLECTION AT RATED	DIMENSIONS (mm)										
				A	B	C	D	E	F	G	H	J		
EFOS25/30	Yellow	30	25											
EFOS25/60	Green	60	25											
EFOS25/100	Blue	100	25	115	85	75	110	10	M10	8	20	55		
EFOS25/160	White	160	25											
EFOS25/250	Red	250	25											
EFOS25/200	Red	200	25											
EFOS25/300	Purple	300	25											
EFOS25/400	Grey	400	25											
EFOS25/500	Orange	500	25	144	110	100	140	11	M16	12	27	75		
EFOS25/600	Brown	600	25											
EFOS25/700	Orange/Black	700	25											
EFOS25/800	Brown/Black	800	25											
EFOS50/100	Yellow	100	50											
EFOS50/200	Green	200	50											
EFOS50/300	Blue	300	50											
EFOS50/400	White	400	50	180	110	100	140	11	M16	12	27	75		
EFOS50/500	Red/Black	500	50											
EFOS25/650	Yellow	650	26											
EFOS25/850	Green	850	27	175	165	130	200	18	M20	16	42	127		
EFOS25/1050	Blue	1050	26											
EFOS25/1250	White	1250	26											
EFOS25/1300	Red	1300	27											
EFOS25/1600	Purple	1600	25	225	210	150	250	18	M24	16	51	152		
EFOS25/2000	Grey	2000	26											
EFOS25/2300	Brown	2300	29											
EFOS50/510	Black/Purple	510	51											
EFOS50/760	Black/Grey	760	51											
EFOS50/1000	Black/Orange	1000	50											
EFOS50/1300	Black/Brown	1300	53	240	210	150	250	18	M20	16	42	127		

Spring Stiffness is linear over its working range.



PART NO.	COLOUR CODE	RATED LOAD (KG)	DEFLECTION AT RATED LOAD (MM)
EFOSB20/10	Purple	10	20
EFOSB20/15	Yellow	15	20
EFOSB20/20	Grey	20	20
EFOSB20/40	Green	40	20
EFOSB20/70	Red	70	20
EFOSB20/100	Blue	100	20



- ⇒ Due to policy of continual improvement, the specifications are subject to change without prior notice.
- ⇒ Measurements are subject to 5% tolerance.
- ⇒ To achieve good sound suppression do not over load fitting.